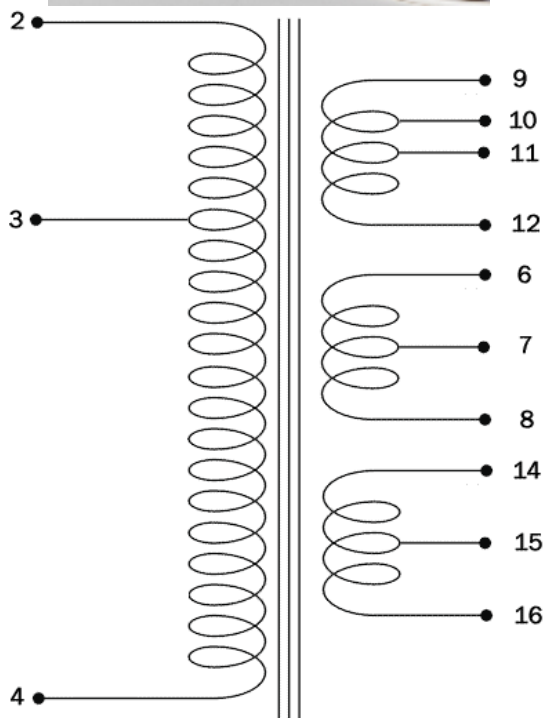


A: 103mm
B: 110mm
C: 125mm
D: 80mm
E: 75mm



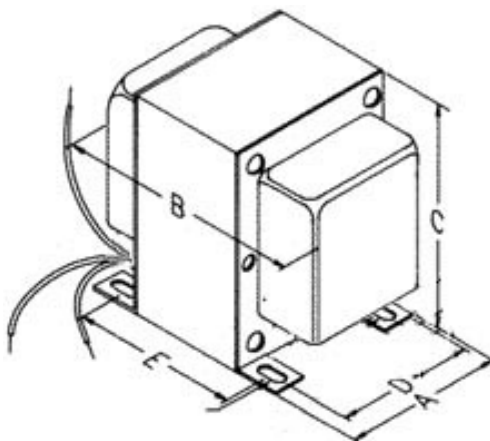
RETE/50Hz			ANODICA		
2	O	240V	360V	O	9
3	O	220V	60V	O	10
4	O	0	200mA CT	O	11
			360V	O	12
FILAMENTI			FILAMENTI		
6	O	3,15V	3,15V	O	14
7	O	CT 3A	6A CT	O	15
8	O	3,15V	3,15V	O	16

Power Trasformer mod.	Primary	Secondary	Replacement
TASLO50	220/240	360-60-0-360/3.15-0-3.15/3.15-0-3.15	Soldano SLO50

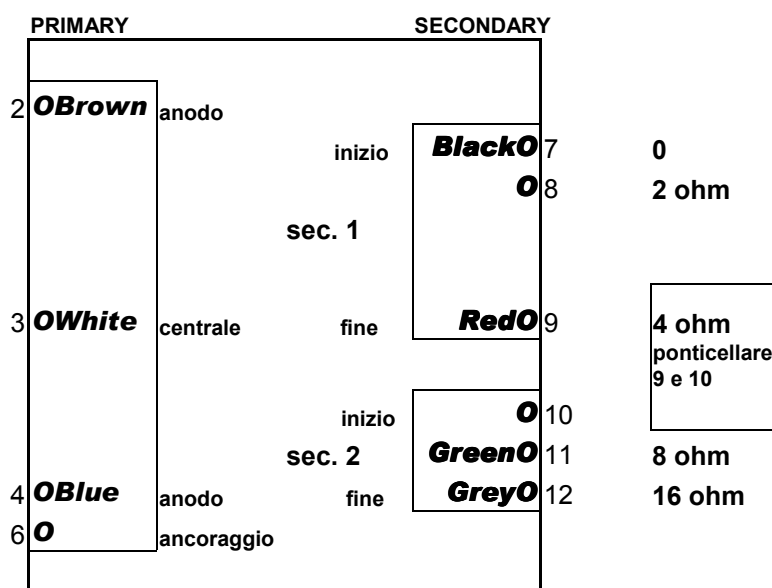
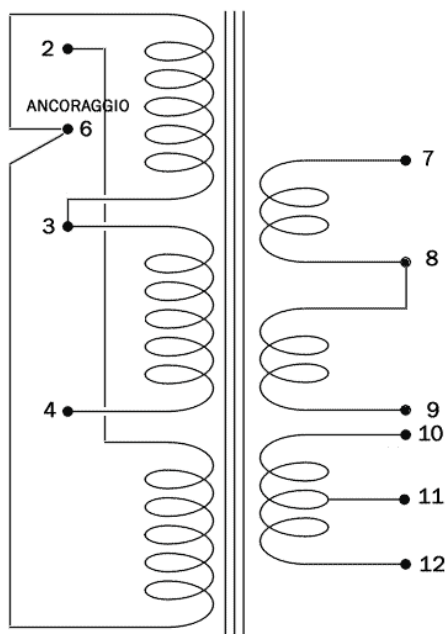
Dimensions (HxWxD):	Weight (Kg):	Mount: vertical
---------------------	--------------	------------------------

Nucleo centrale lamierini (colonna x altezza pacco lamierini)	mm	40x36
Sezione nucleo centrale	cm2	12,97
Induzione magnetica	W/m2	1,2
f.e.m.i. in una spira	V	0,345
Rendimento del trasformatore	n	0,85
Caduta di tensione percentuale	V%	2,92
Frequenza di lavoro	Hz	50
Potenza assorbita dal primario	VA	168,7
Potenza disponibile al secondario	VA	145

NOTE:



A: 82mm
B: 100mm
C: 100mm
D: 68mm
E: 70mm



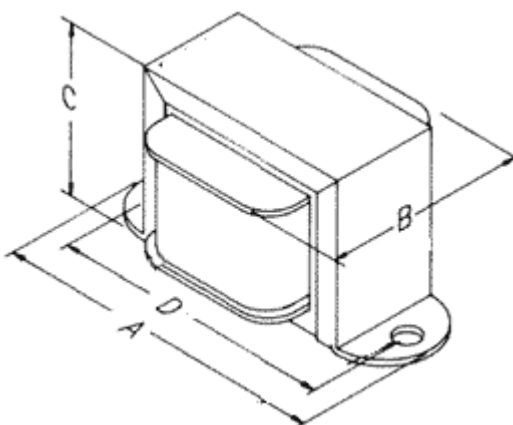
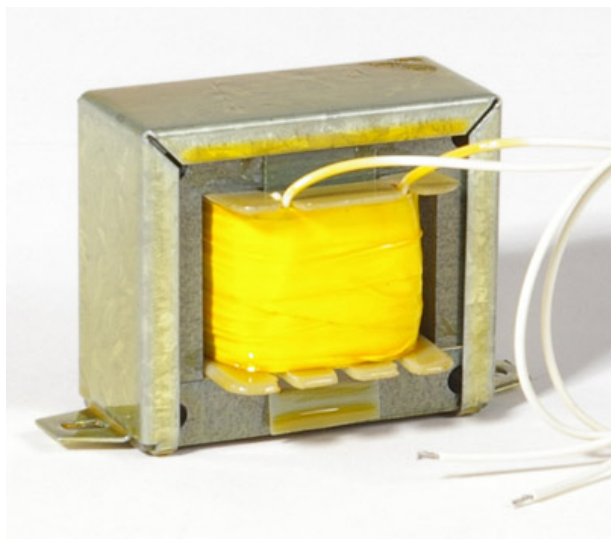
Output Trasformer mod.	Primary	Secondary	Amp. type	Power	Replacement
TUSLO50	4400ohm	2,4,8,16	push pull	50/80W	Soldano SLO50

Dimensions (HxWxD):	Weight (Kg):	Mount: vertical
---------------------	--------------	------------------------

Nucleo centrale lamierini (colonna x altezza pacco lamierini)	mm	32x40
Sezione nucleo centrale	cm2	11,53
Volume pacco lamierini	mm2	245,7
Peso del pacco lamierini	Kg	1,671
Induttanza primario	Henry	43,76
Induzione magnetica	W/m2	1
Frequenza minima riproducibile	Hz	16
Potenza assorbita dal primario	VA	80
Potenza disponibile al secondario	VA	70

NOTE:

IMPEDENZA CM10



A: 95mm
B: 64mm
C: 62mm
D: 80mm

Choke mod.	Ind. Henrys	DC Current	Resistance	Max V DC	Replacement
CM10	10H	125mA	115ohm	500	

Dimensions (HxWxD):	Weight (Kg):	Mount:
NOTE:		

