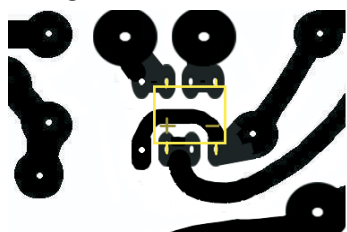
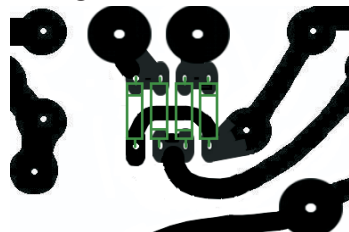


PCB - Sammy Mods v1.1

Using Db101:

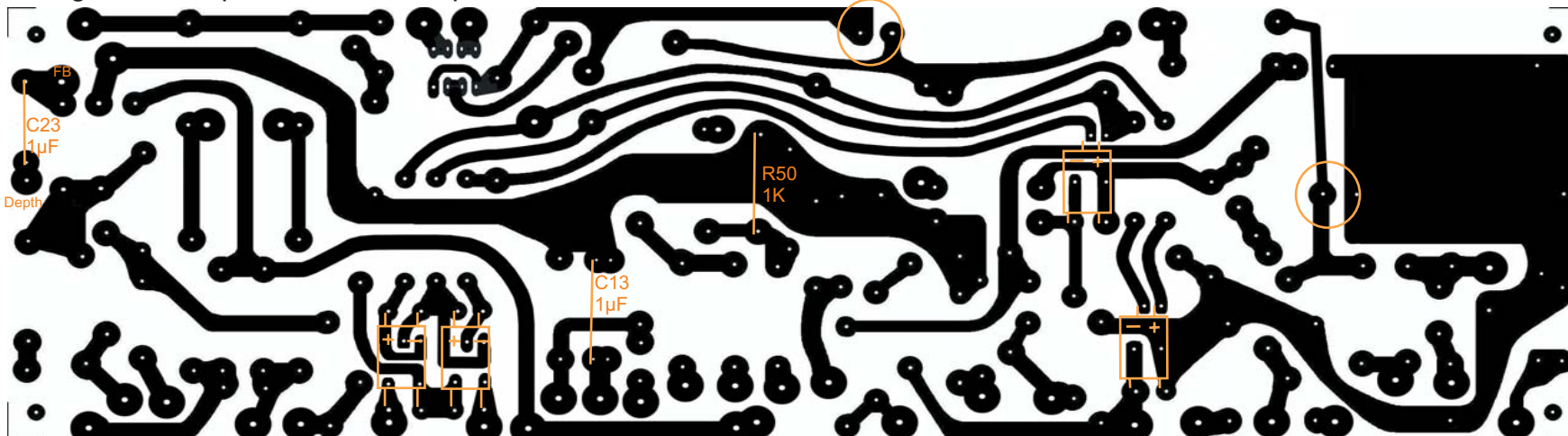


Using Diodes:

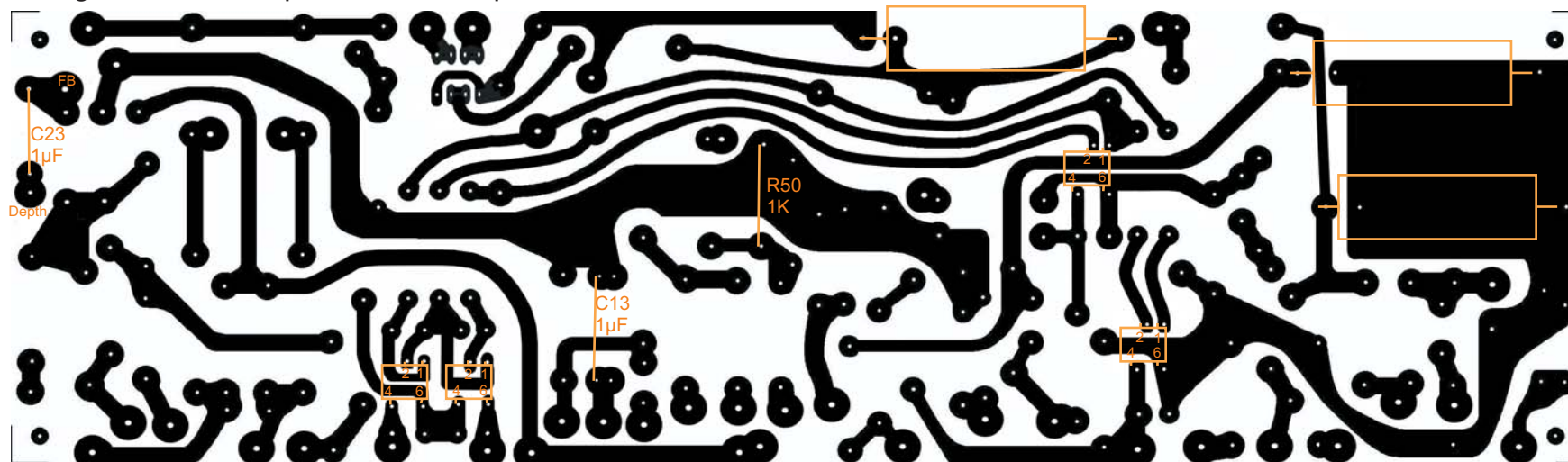


Version1.1 - Added the C14 for Depth Mod.
- Added R50 and C13 for Odb mod.

Using Radial Caps and VTL5C1 Optos:



Using Axial Elect. Caps and H11F1 Optos * :



* Cut or remove unused pins! I recommend using 6 pin sockets, it's easy to remove unused pins and we can remove the optos anytime we want .

