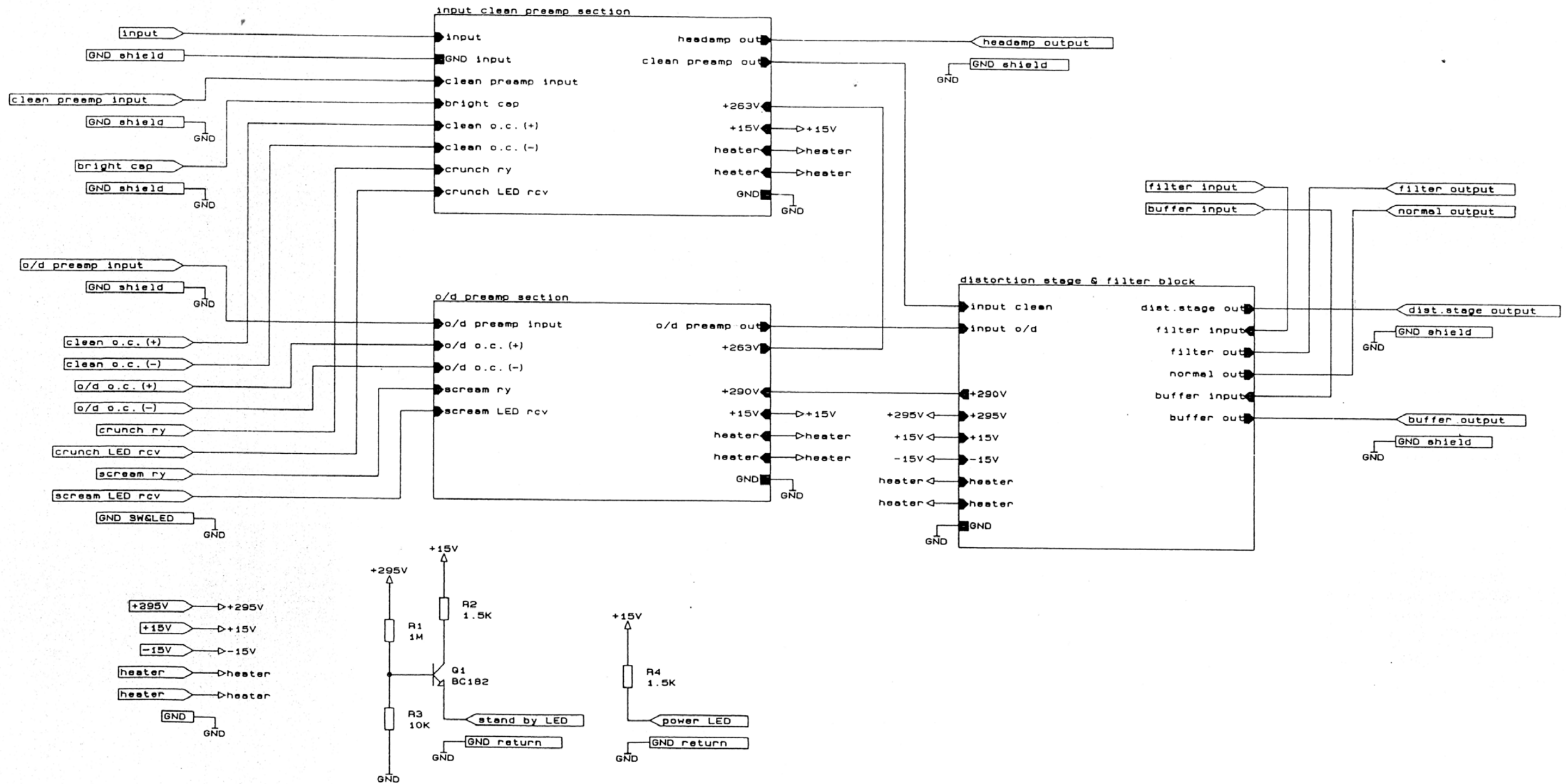
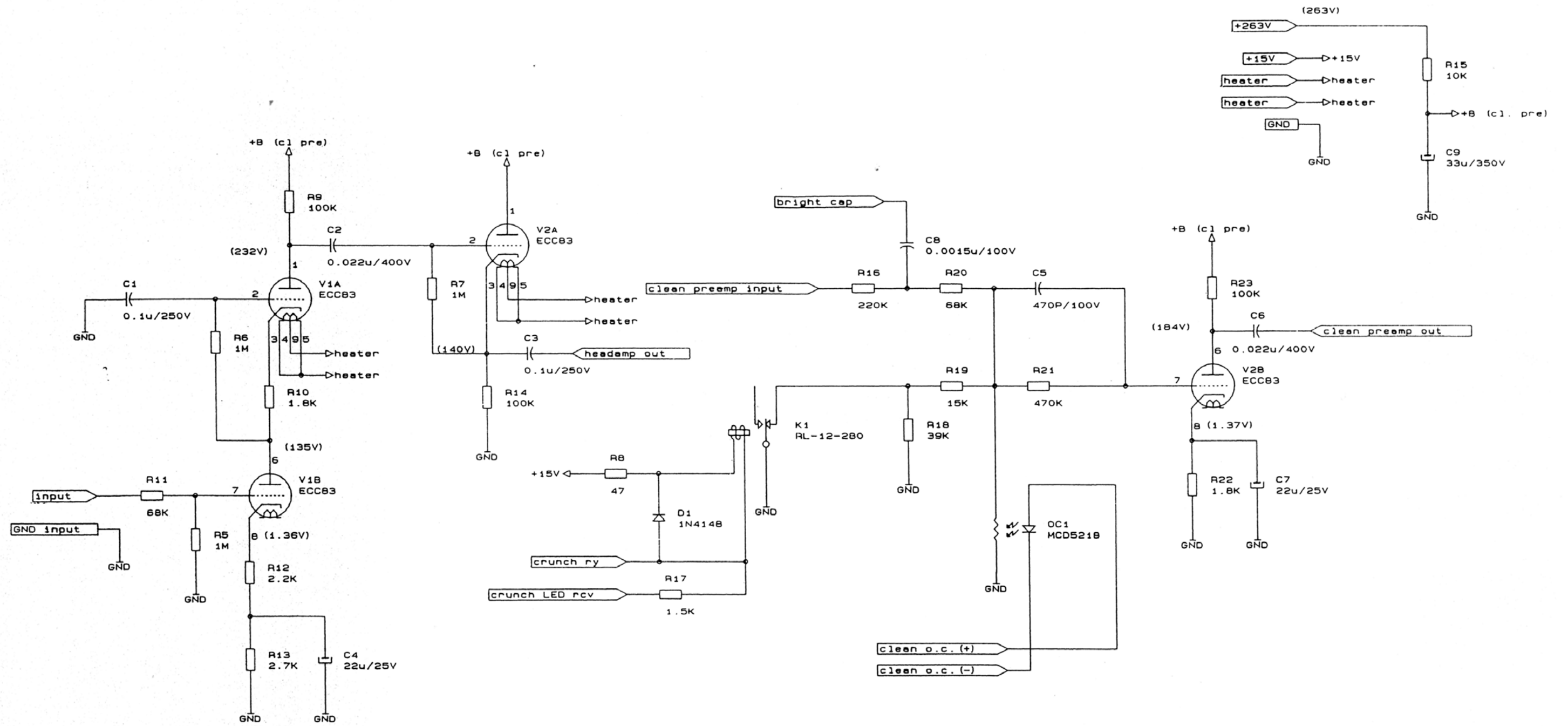


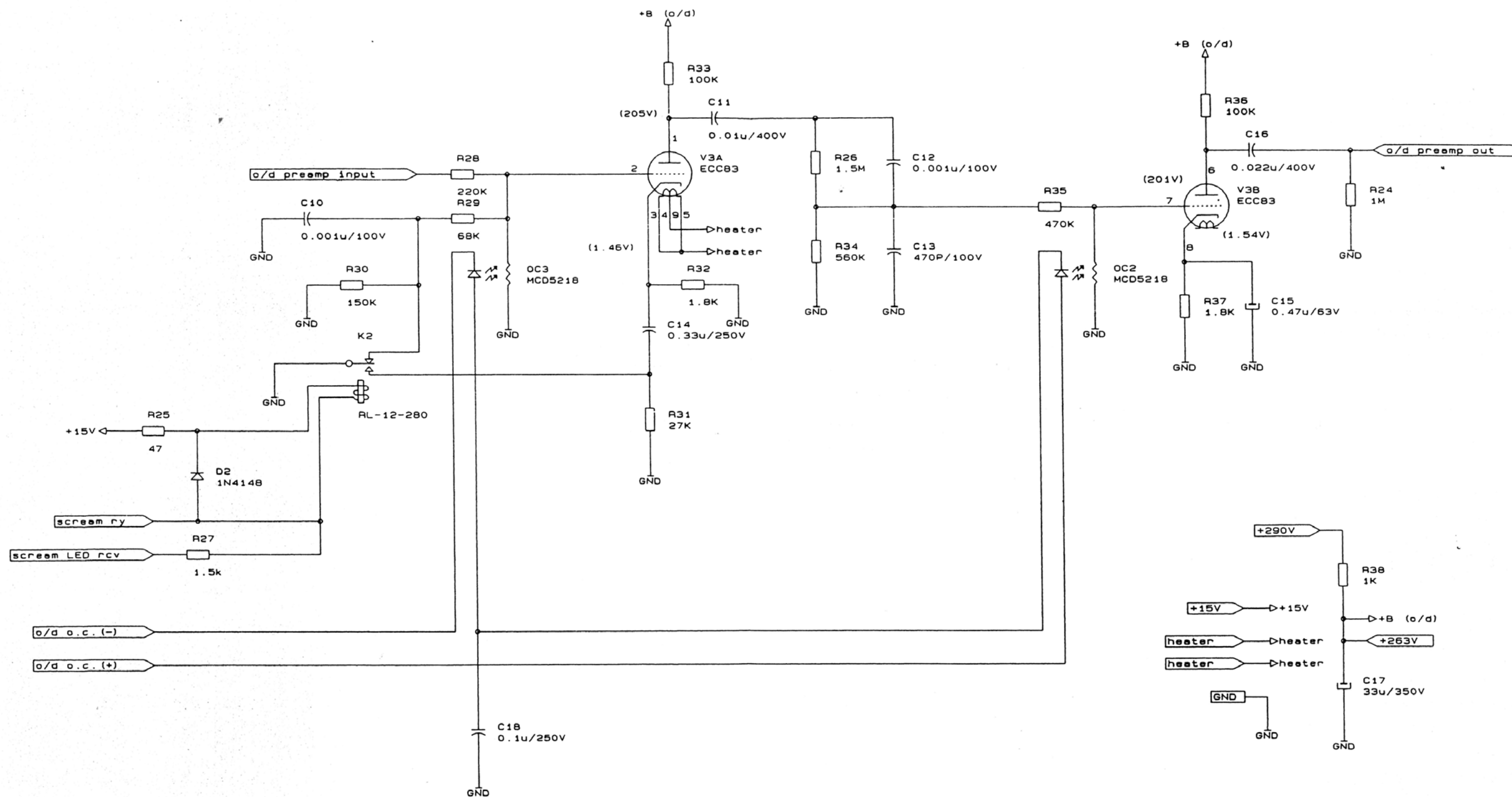
Title		
SVA1 Front panel assy.		
Size	Document Number	REV
B		1
Date:	October 26, 1991	Sheet 10 of 14
	2	1



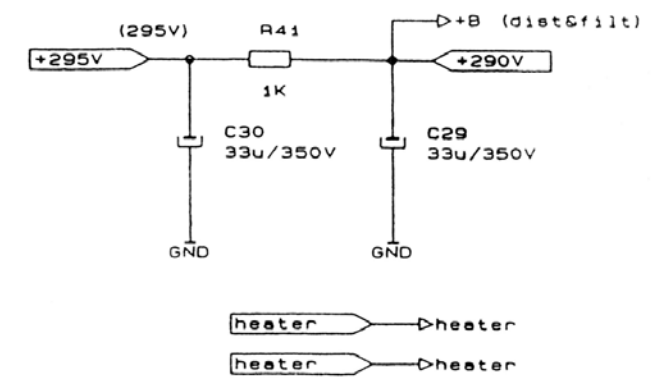
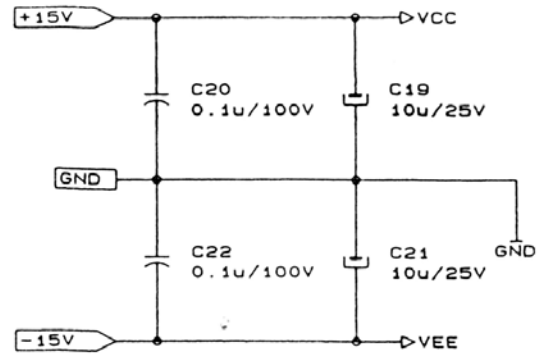
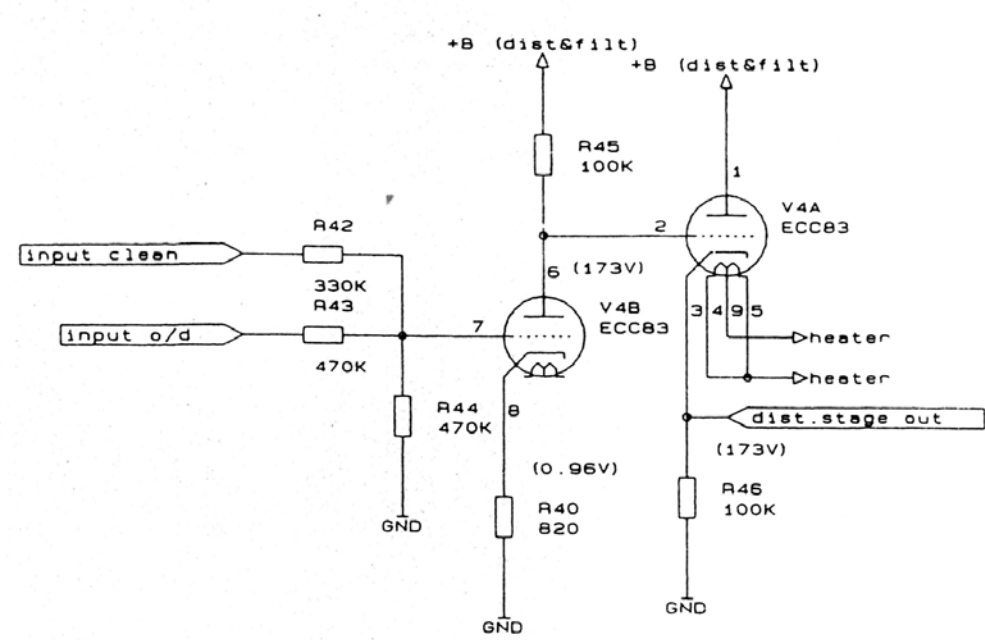
Title		
SVA1 Preamp pcb		
Size	Document Number	REV
B		1
Date: October 28, 1991		
Sheet 2 of 14		



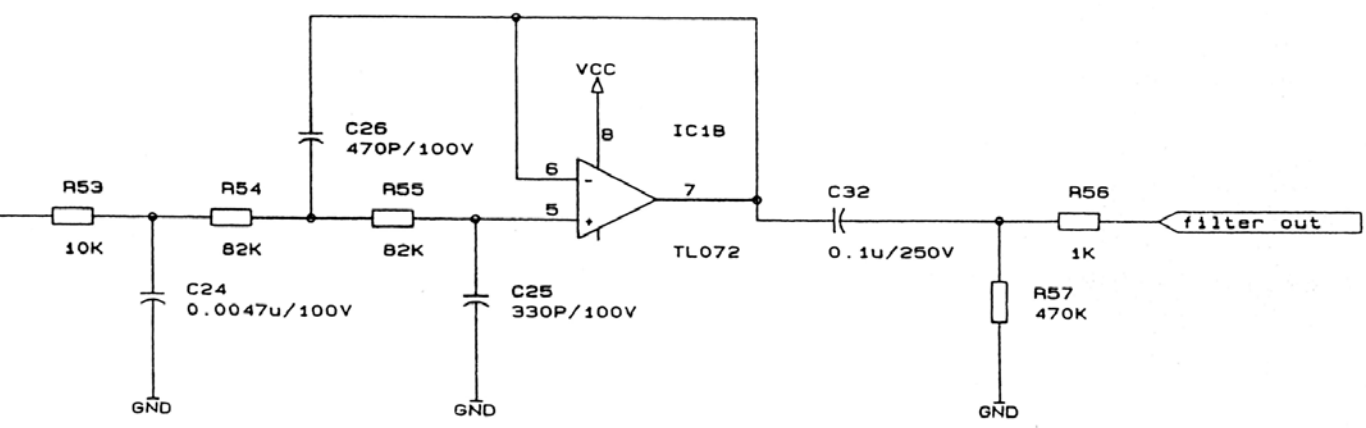
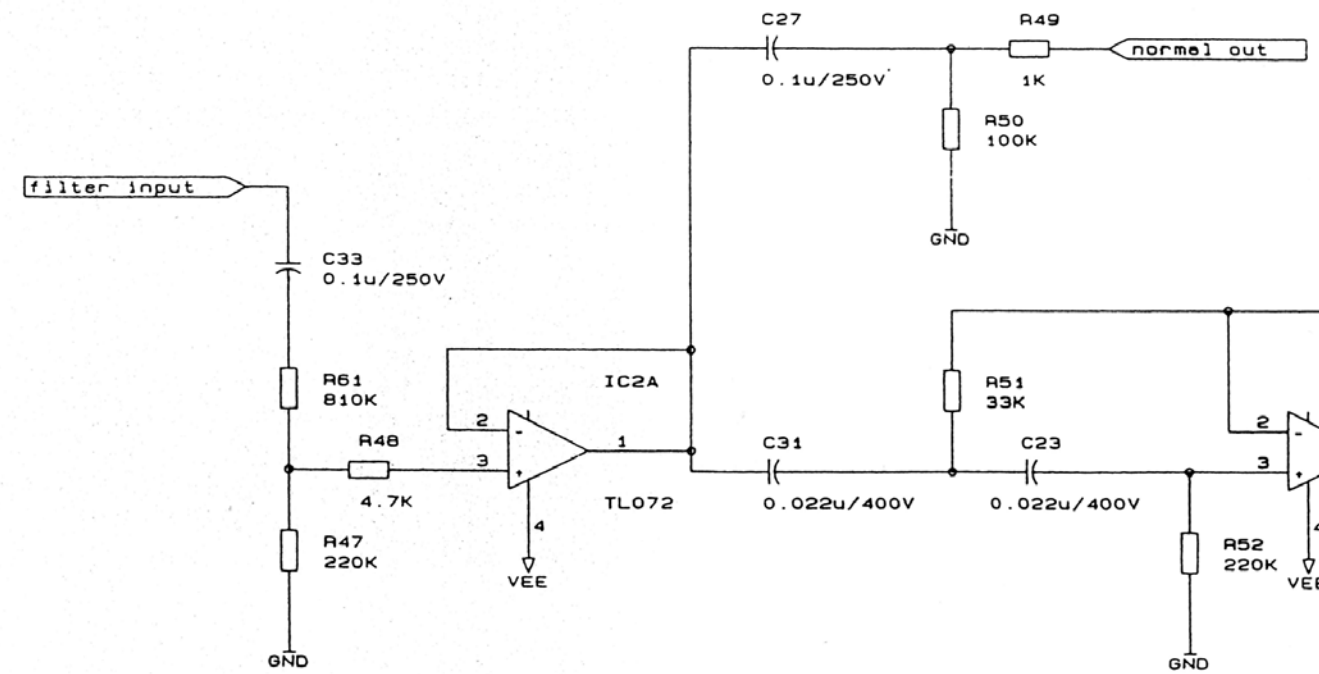
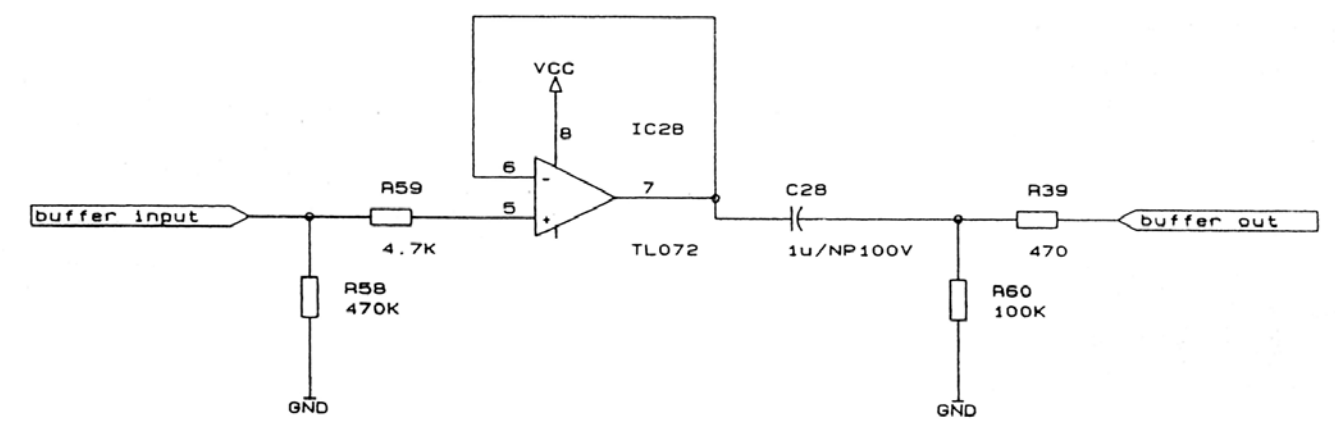
Title		
SVA1 Headamp & clean preamp section		
Size	Document Number	REV
B		1
Date:	October 25, 1991	Sheet 3 of 14



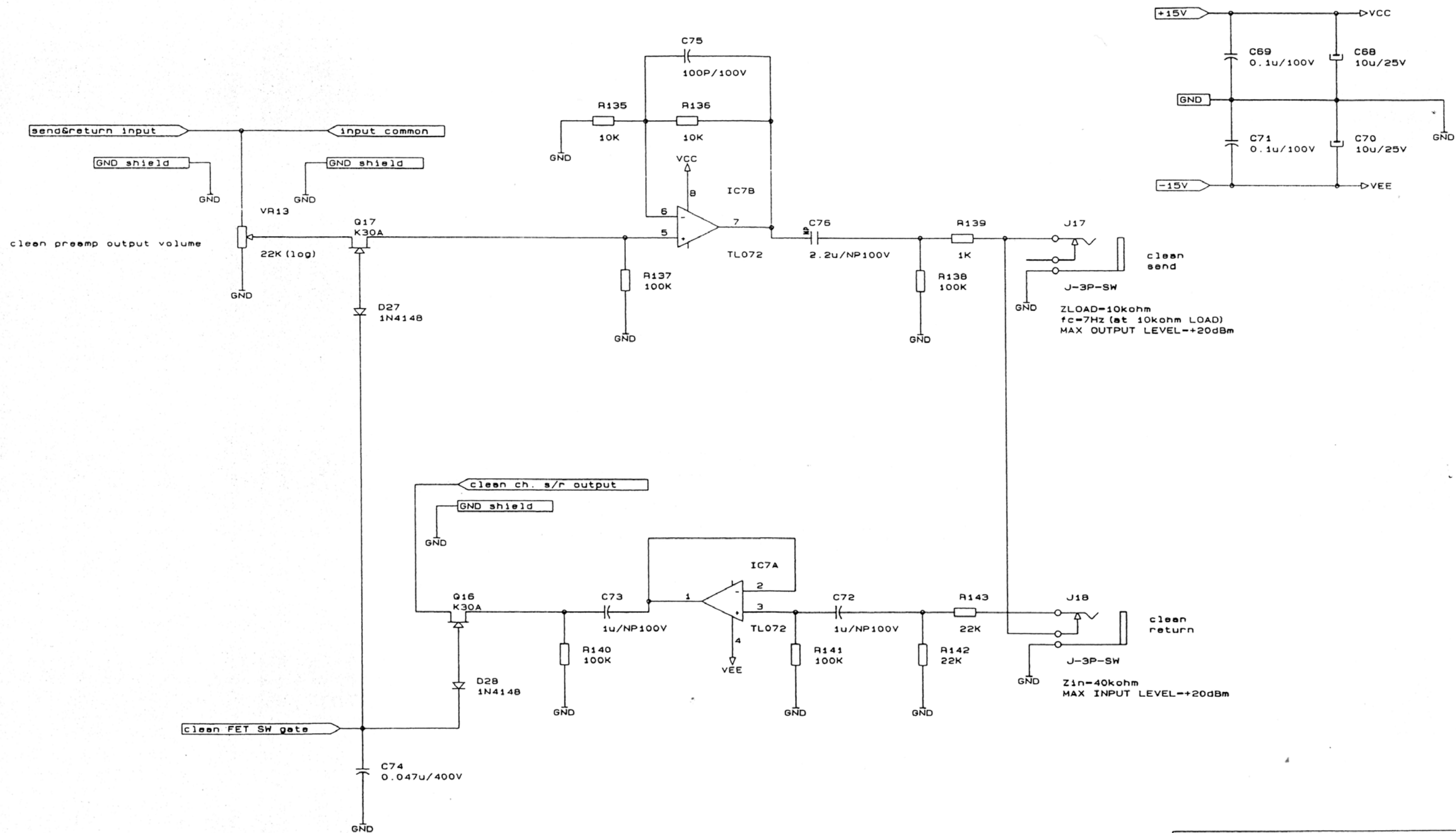
Title		
SVA1 O/D preamp section		
Size	Document Number	REV
8		1
Date:	October 25, 1991	Sheet 4 of 1



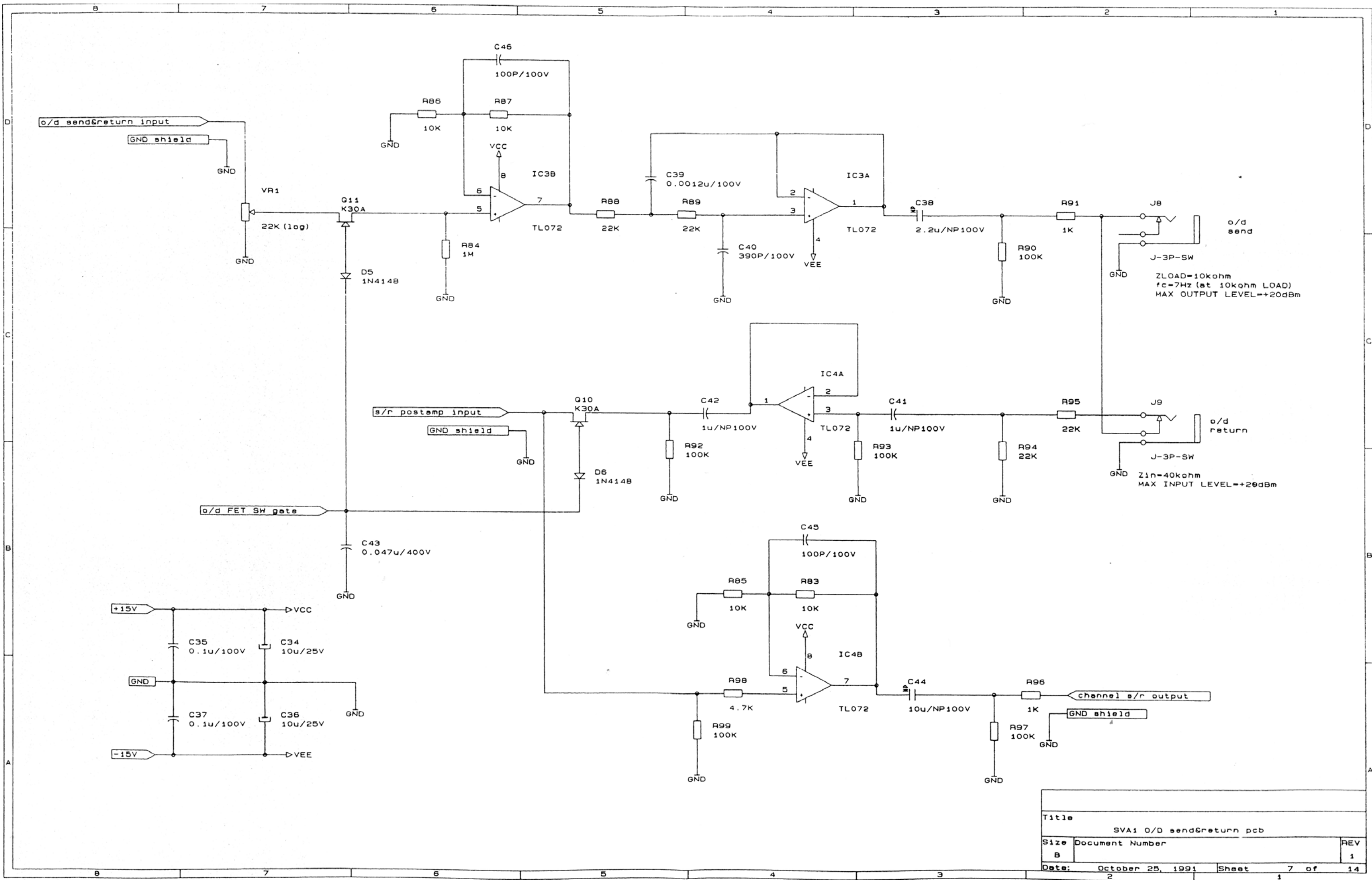
MAX. OUTPUT LEVEL =
11V_{RMS} (TONE: FULL UP) ---



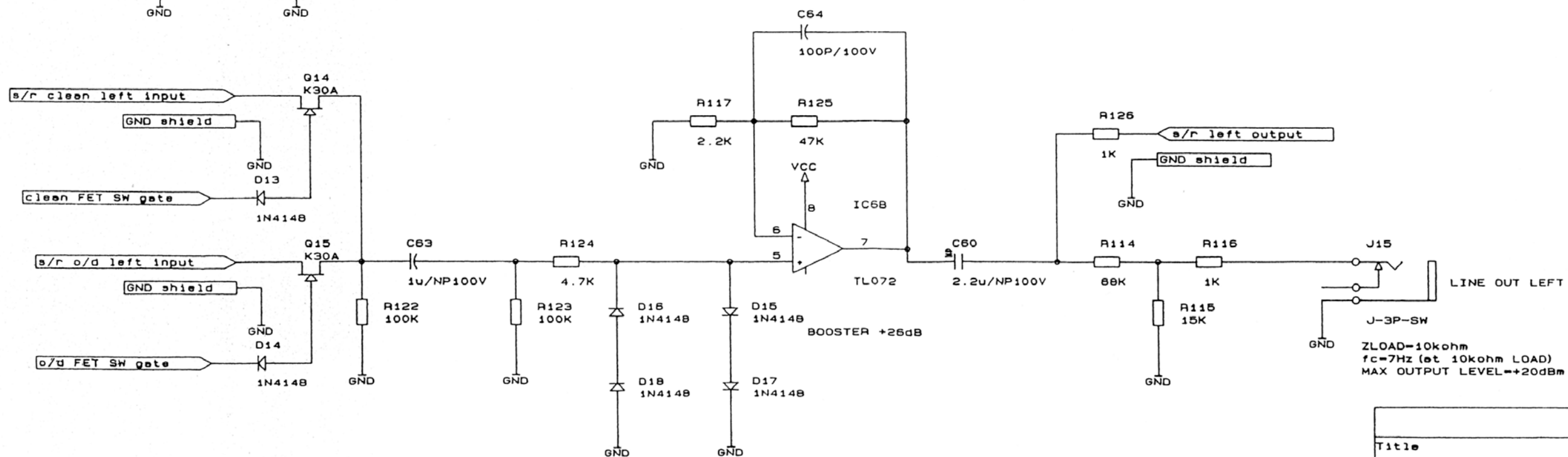
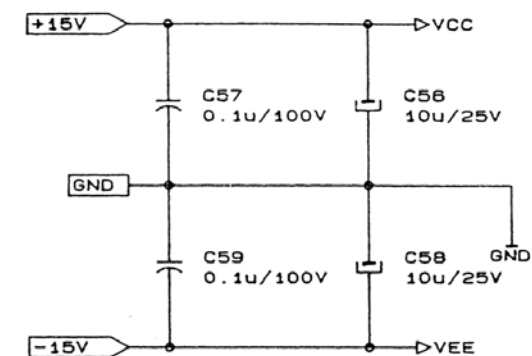
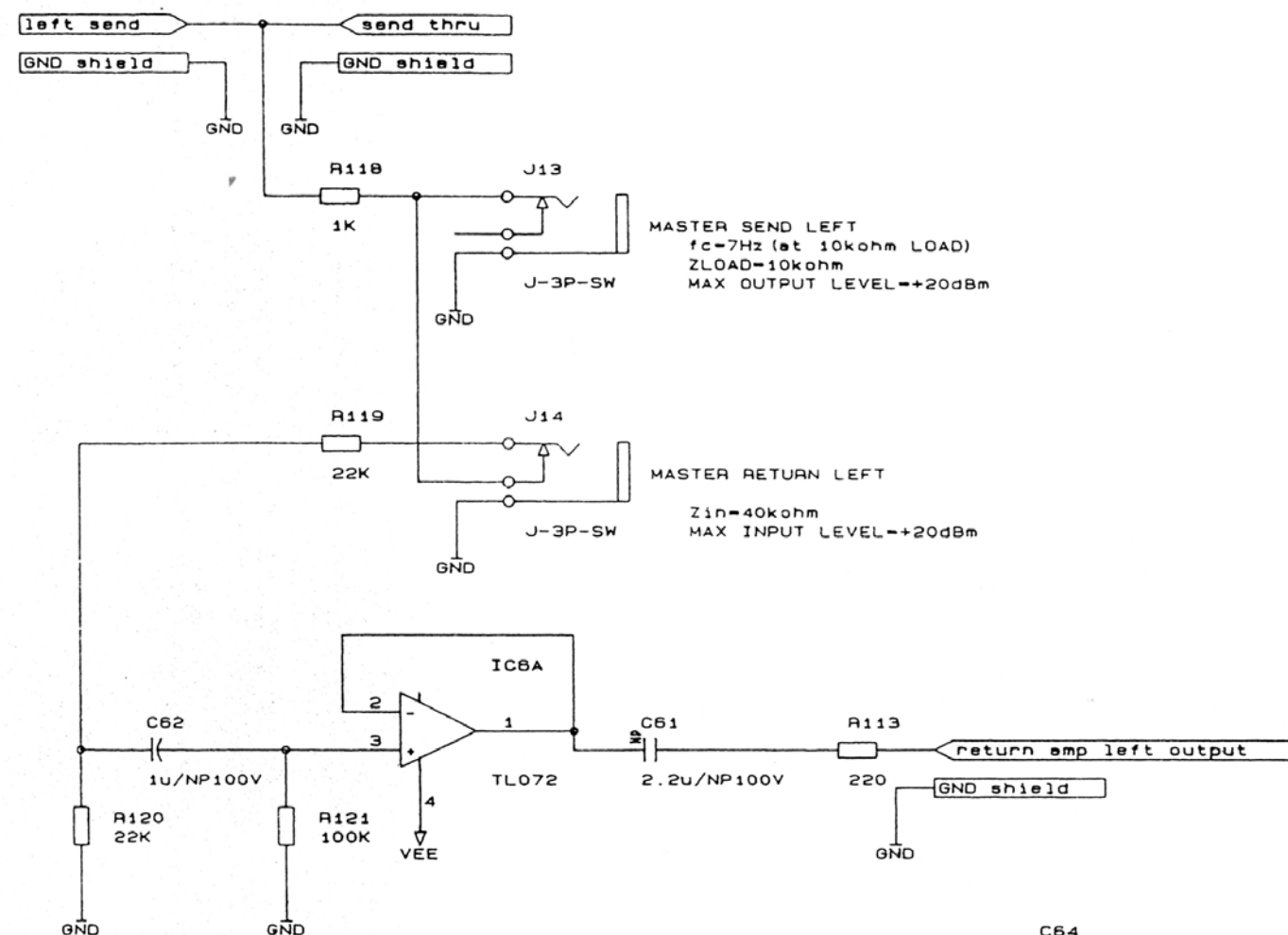
Title		
SVA1 Dist. & Filter section		
Size	Document Number	REV
B		1
Date:	October 26, 1991	Sheet 5 of 14



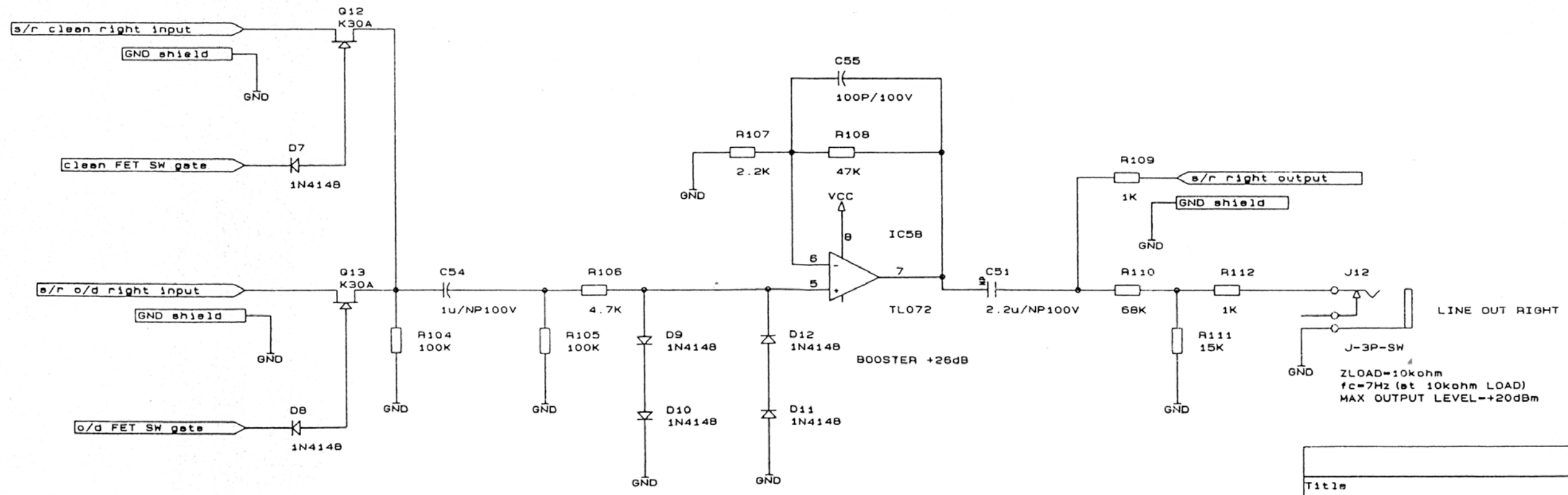
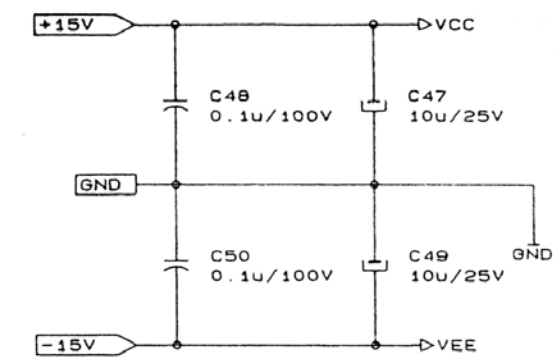
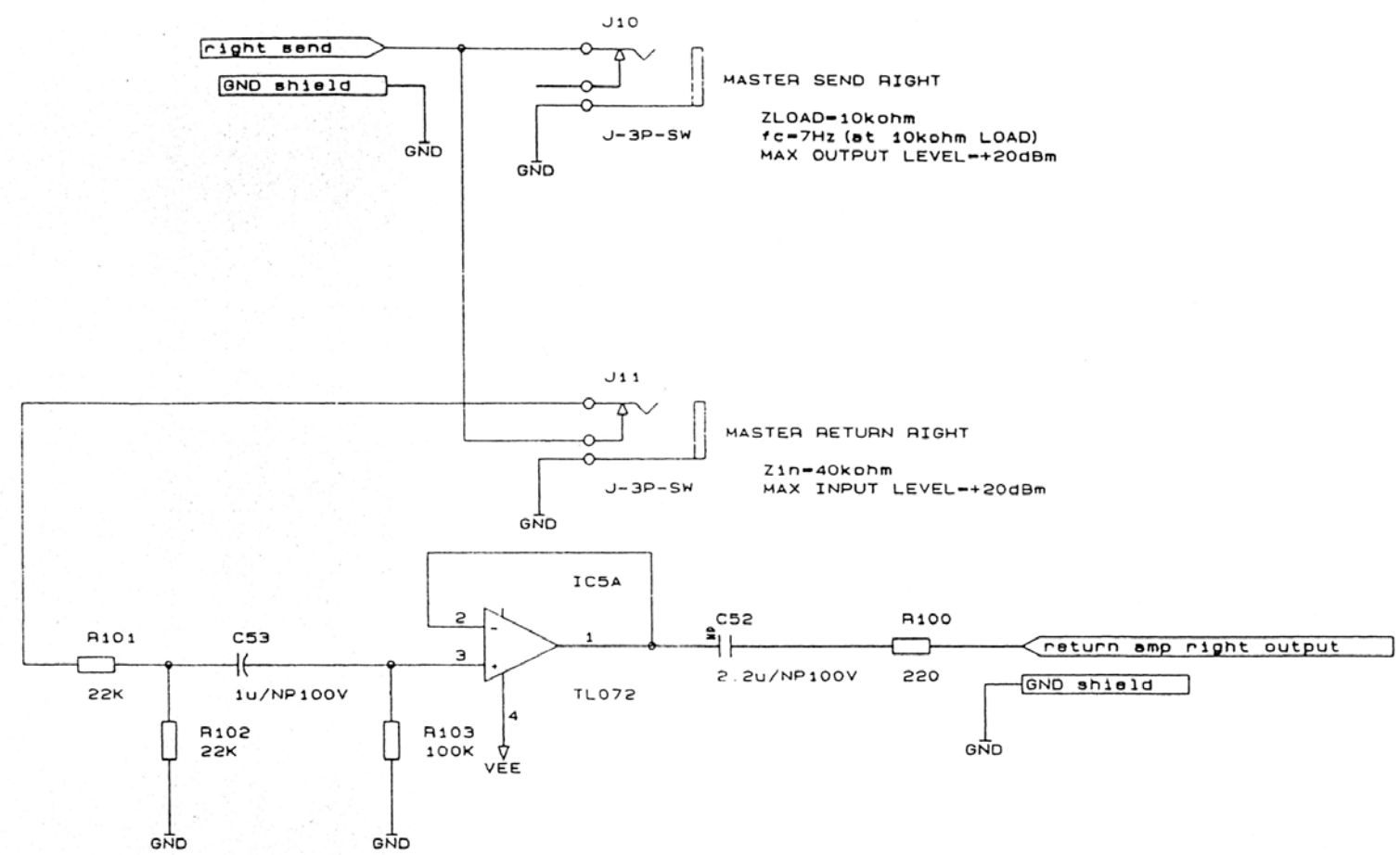
Title		
SVA1 Clean send&return pcb		
Size	Document Number	REV
B		1
Date:	October 25, 1991	Sheet 11 of 14
	2	1



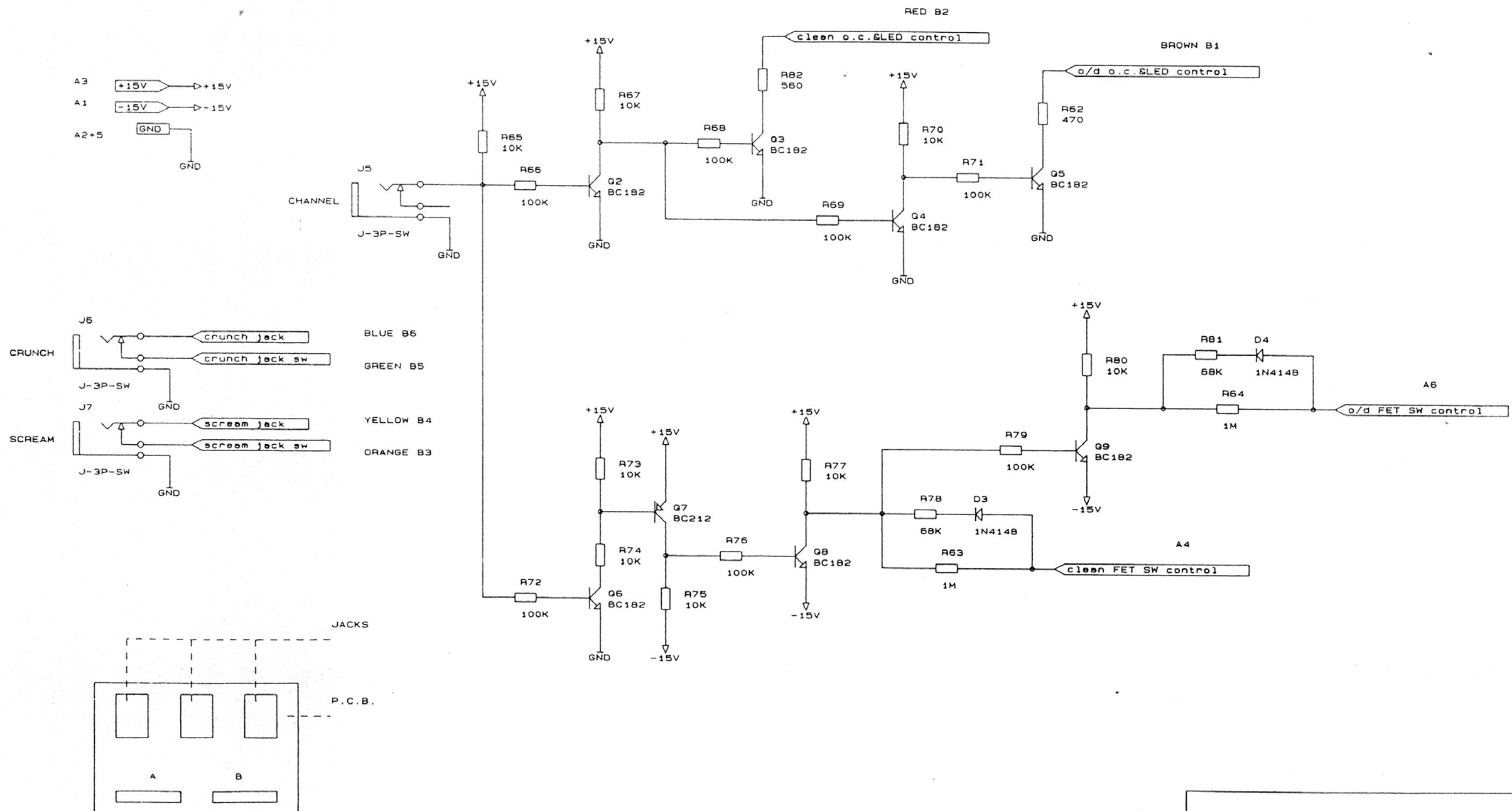
Title			
SVA1 O/D send&return pcb			
Size	Document Number		REV
B			1
Date:	October 25, 1991	Sheet	7 of 14



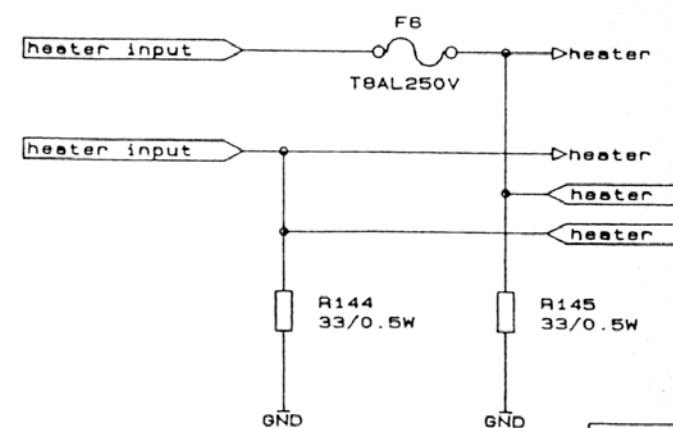
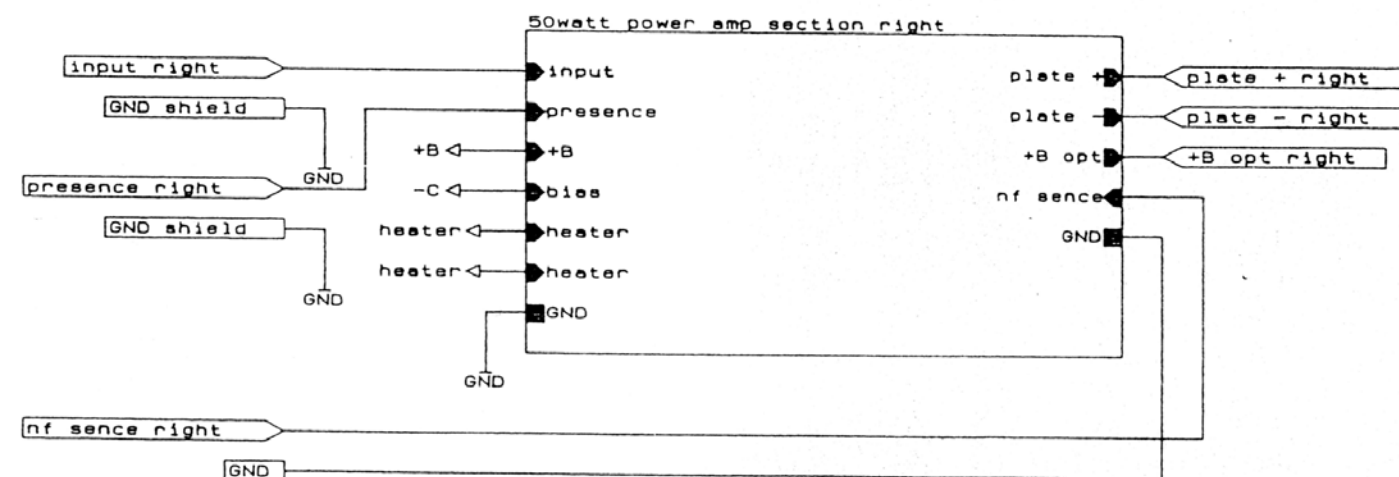
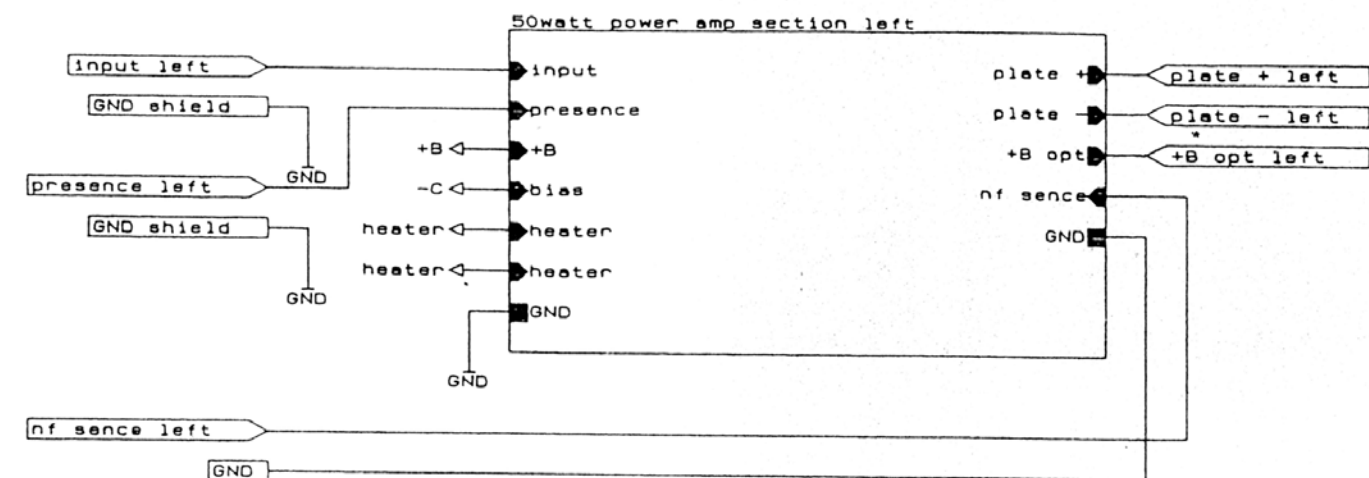
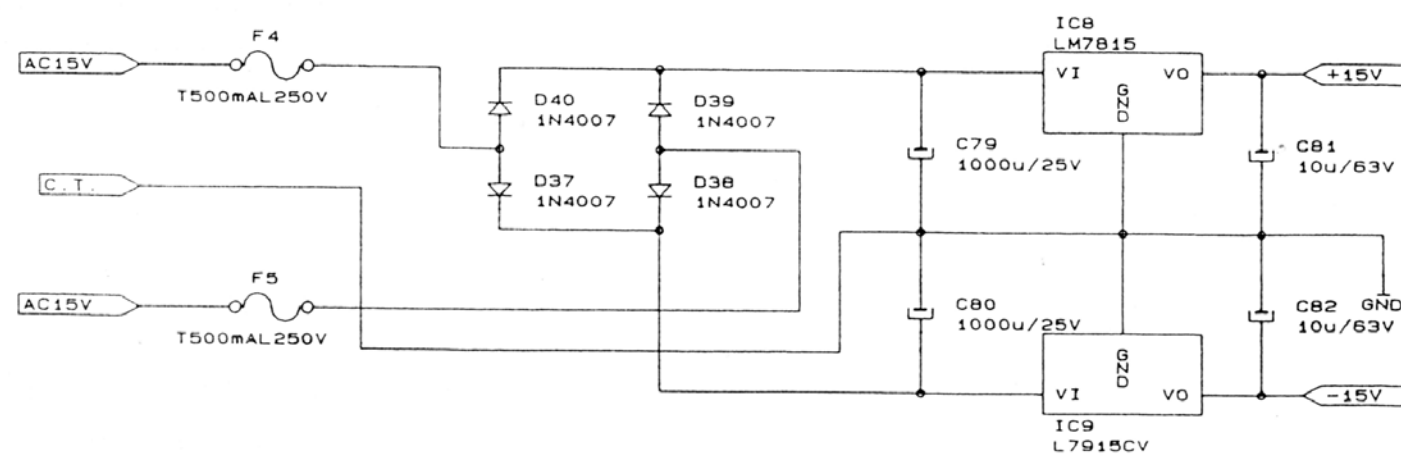
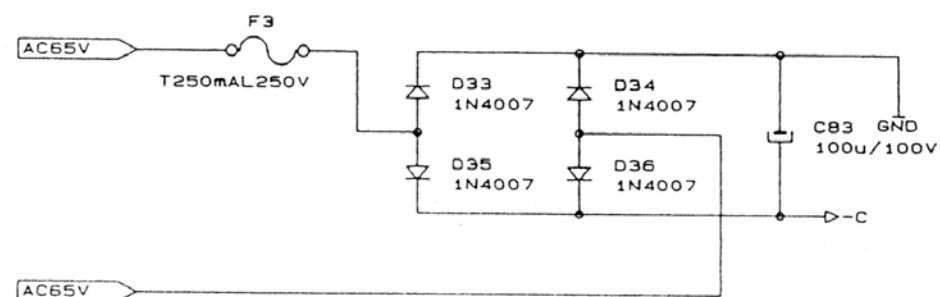
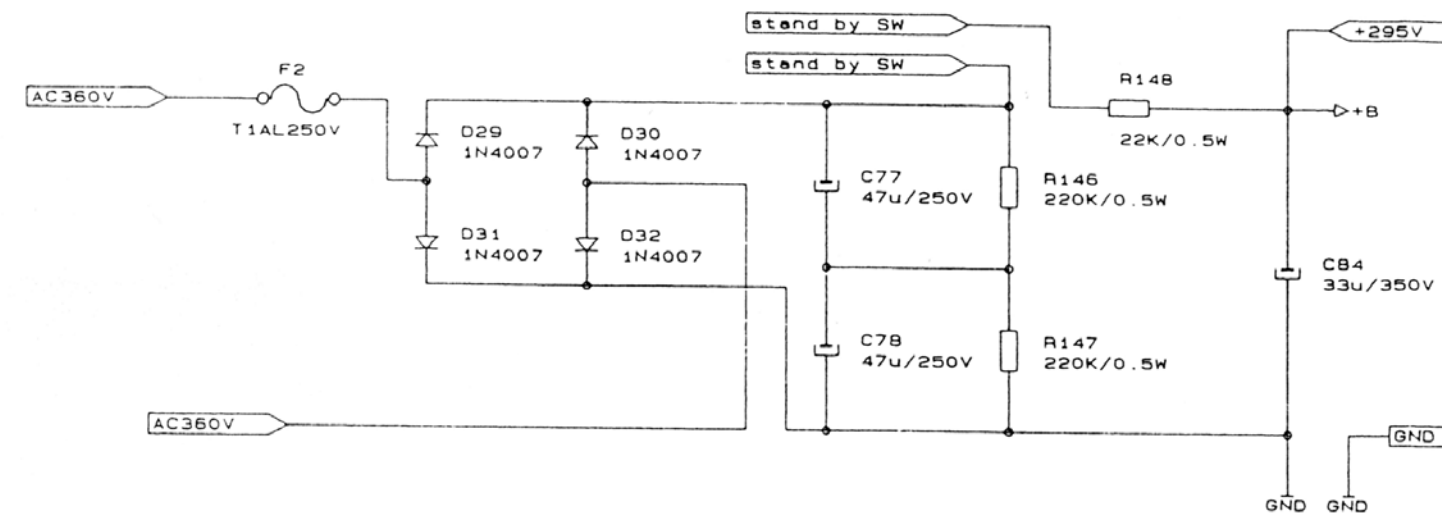
Title		
SVA1 Left send&return pcb		
Size	Document Number	REV
B		1
Date:	October 25, 1991	Sheet 9 of 14



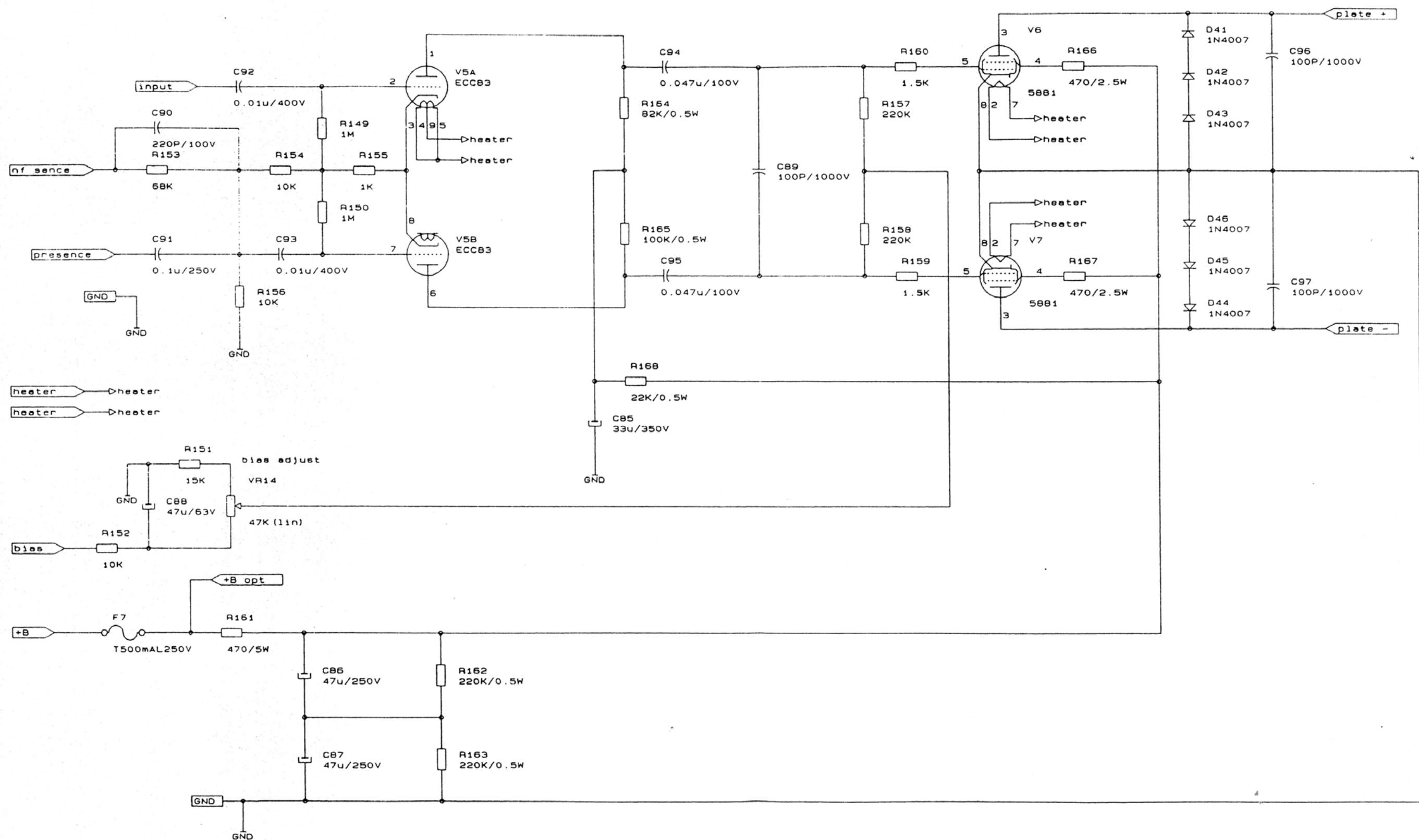
Title		
SVA1 Right send&return pcb		
Size	Document Number	REV
B		1
Date:	October 25, 1991	Sheet 8 of 14



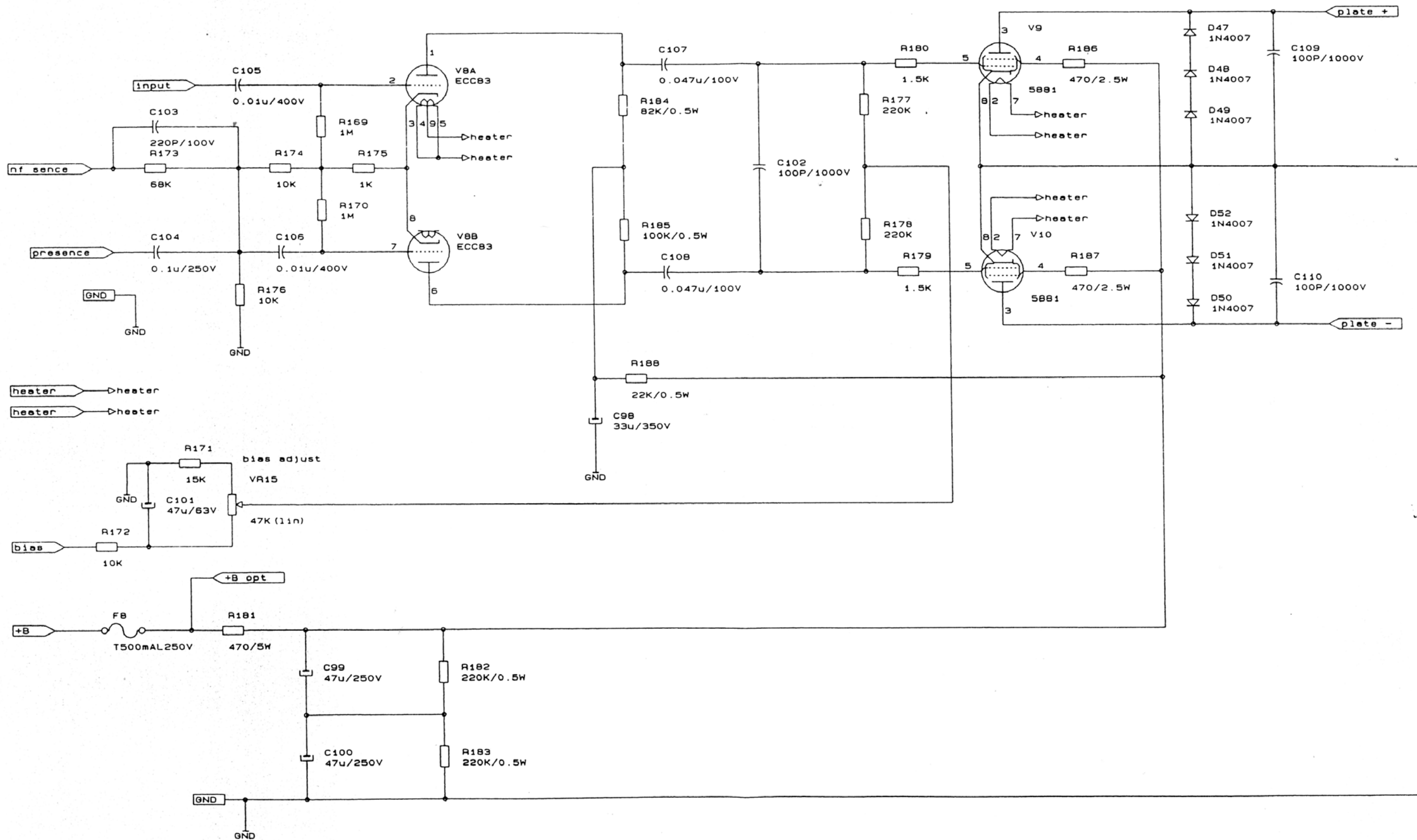
Title		
SVA1 Control logic pcb		
Size	Document Number	REV
B		1
Date:	October 25, 1991	Sheet 6 of 14
	2	1



Title		
SVA1 power supply & 50W+50W pcb		
Size	Document Number	REV
B		1
Date:	October 26, 1991	Sheet 12 of 14



Title		
SVA1 50W power amp section left		
Size	Document Number	REV
B		1
Date:	October 26, 1991	Sheet 13 of 14



Title		
SVA1 50W power amp section right		
Size	Document Number	REV
B		1
Date:	October 26, 1991	Sheet 14 of 14