

ABSOLUTELY NO CLAIMS OR WARRANTIES OF ANY KIND ARE EXPRESSED OR IMPLIED AS TO THE ACCURACY OR SUITABILITY OF THIS DIAGRAM FOR ANY PURPOSE WHATSOEVER. THE USER OF THIS INFORMATION ACCEPTS ALL RESPONSIBILITY FOR THE CONSEQUENCES OF ITS USE.

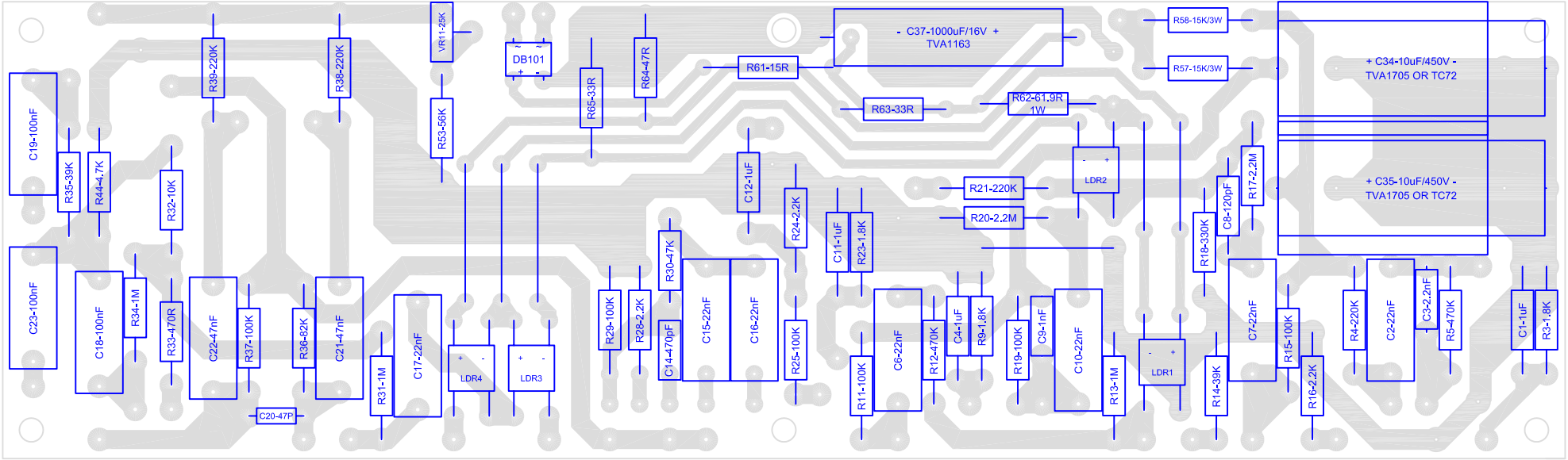
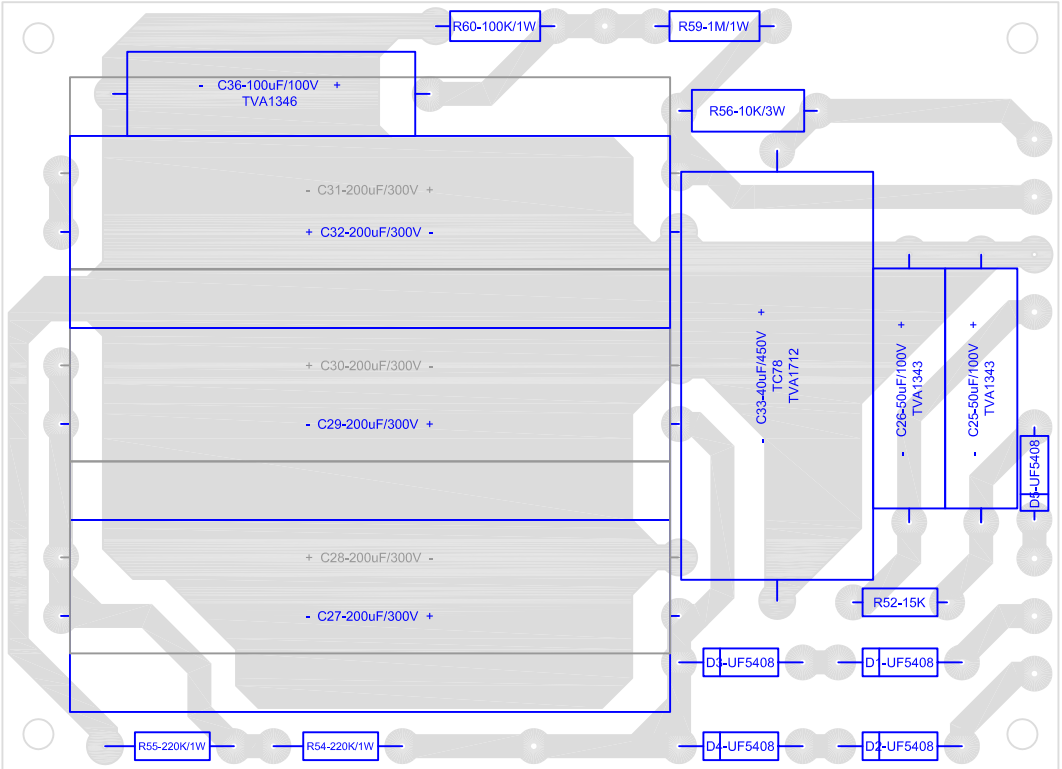
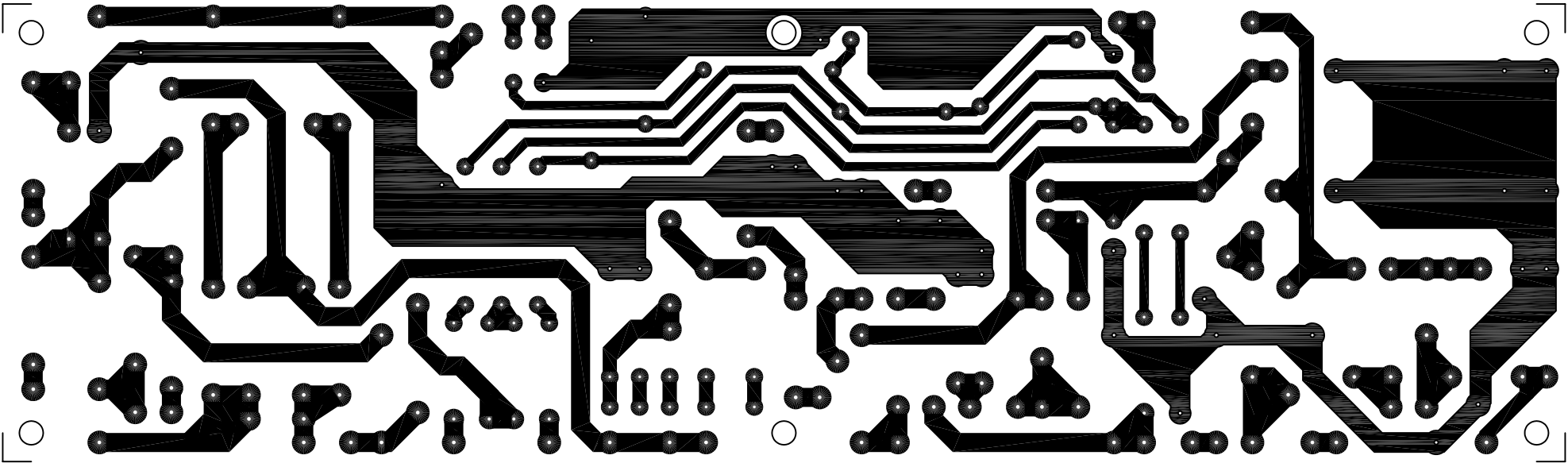
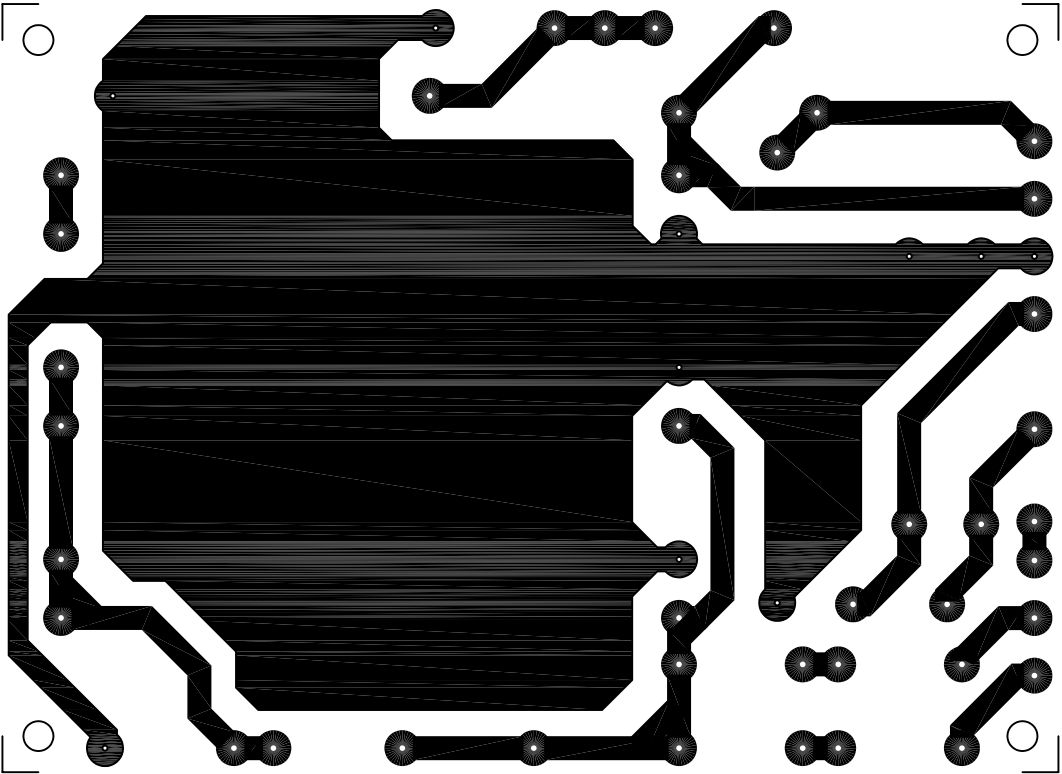
© 2005-PRESENT SLOCLONE FORUMS. ANY DISTRIBUTION WITHOUT EXPRESSED WRITTEN CONSENT IS PROHIBITED. THE SLOCLONE FORUMS ARE IN NO WAY AFFILIATED WITH SOLDANO CUSTOM AMPLIFICATION ®, MICHAEL SOLDANO JR., OR SUPER LEAD 100 OVERDIVE ™.

# SLOCLONE LAYOUT

## POWER & PREAMP PCB'S

Design: SLOCLONE FORUMS

Drawn By: JED                      Scale: 1:1                      Sheet 1 OF 2  
VERSION 1.0                      SHEET SIZE 11"x17"



VERSION HISTORY:  
1.0 INITIAL OFFICIAL PCB LAYOUTS

ABSOLUTELY NO CLAIMS OR WARRANTIES OF ANY KIND ARE EXPRESSED OR IMPLIED AS TO THE ACCURACY OR SUITABILITY OF THIS DIAGRAM FOR ANY PURPOSE WHATSOEVER. THE USER OF THIS INFORMATION ACCEPTS ALL RESPONSIBILITY FOR THE CONSEQUENCES OF ITS USE.

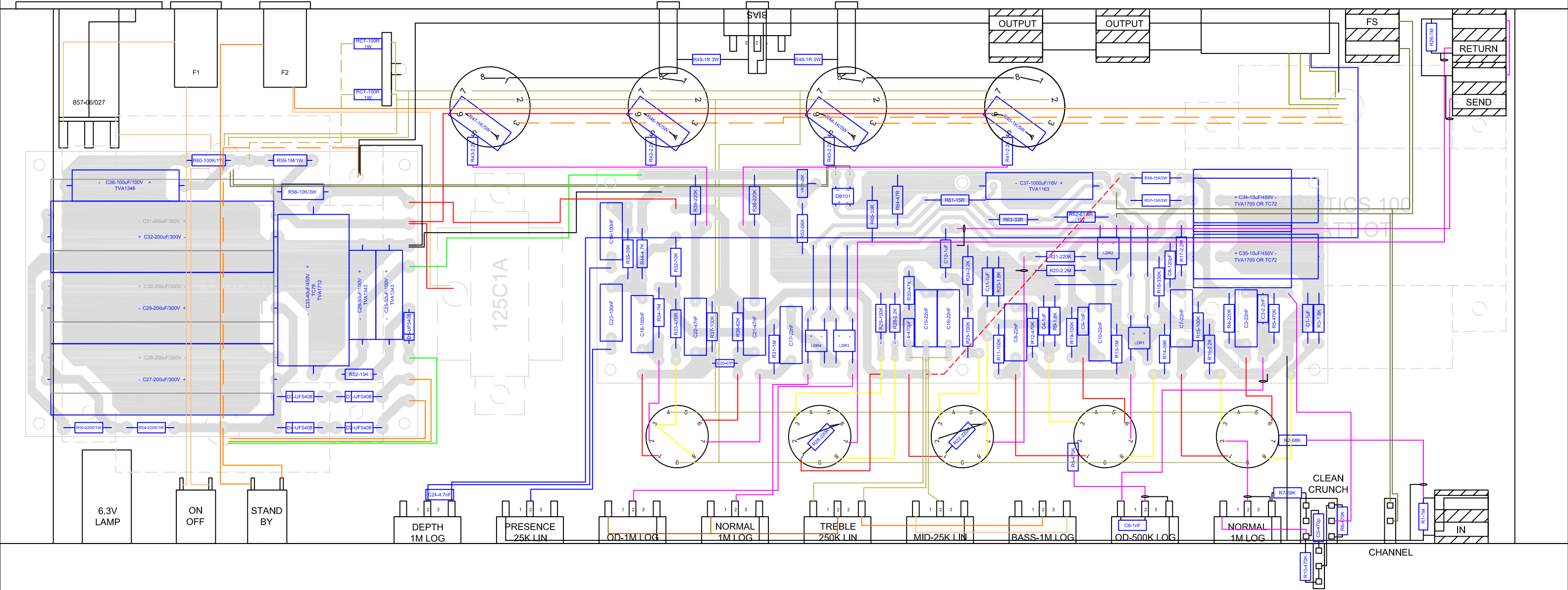
© 2005-PRESENT SLOCLONE FORUMS. ANY DISTRIBUTION WITHOUT EXPRESSED WRITTEN CONSENT IS PROHIBITED. THE SLOCLONE FORUMS ARE IN NO WAY AFFILIATED WITH SOLDANO CUSTOM AMPLIFICATION ®, MICHAEL SOLDANO JR., OR SUPER LEAD 100 OVERDIVE™.

# SLOCLONE LAYOUT

## FULL LAYOUT

Design: SLOCLONE FORUMS

Drawn By: JED                      Scale: 1:1.5                      Sheet 2 OF 2  
VERSION 1.0                      SHEET SIZE 11"x17"



VERSION HISTORY:  
1.0 INITIAL OFFICIAL PCB & FULL LAYOUTS

