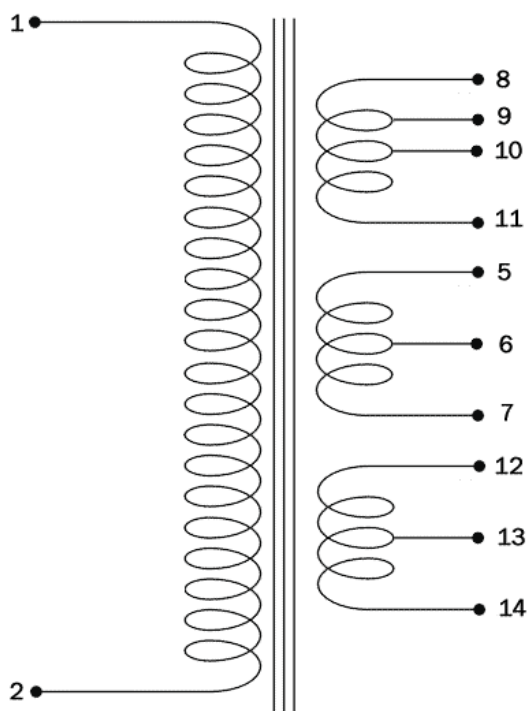


A: 103mm  
B: 123mm  
C: 125mm  
D: 80mm  
E: 75mm



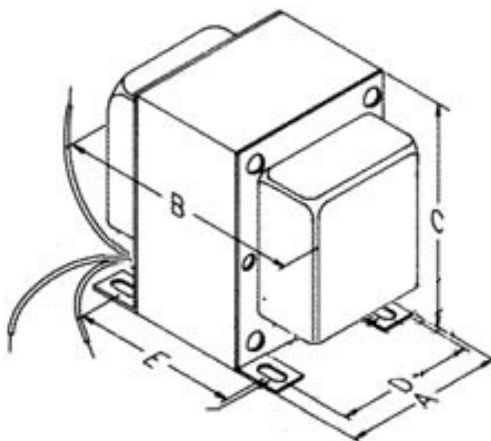
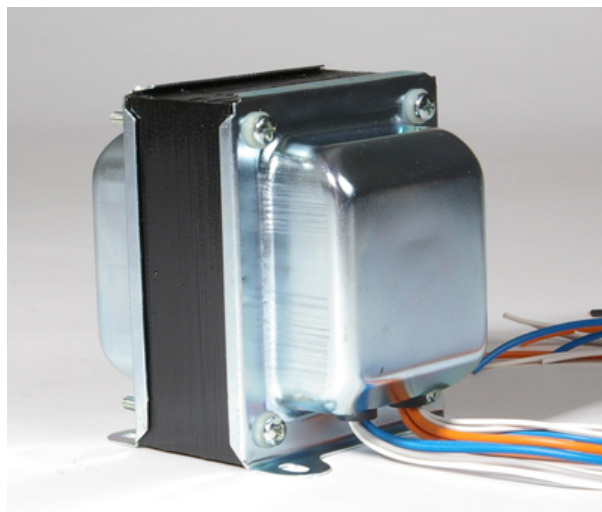
RETE/50Hz		ANODICA	
2	230V	360V	8
3		60V	9
		400mA CT	10
		360V	11
FILAMENTI		FILAMENTI	
5	3,15V	3,15V	12
6	CT 3A	7,5A CT	13
7	3,15V	3,15V	14

Power Trasformer mod.	Primary	Secondary	Replacement
TASLO100	230	360-60-0-360/3.15-0-3.15/3.15-0-3.15	Soldano SLO100

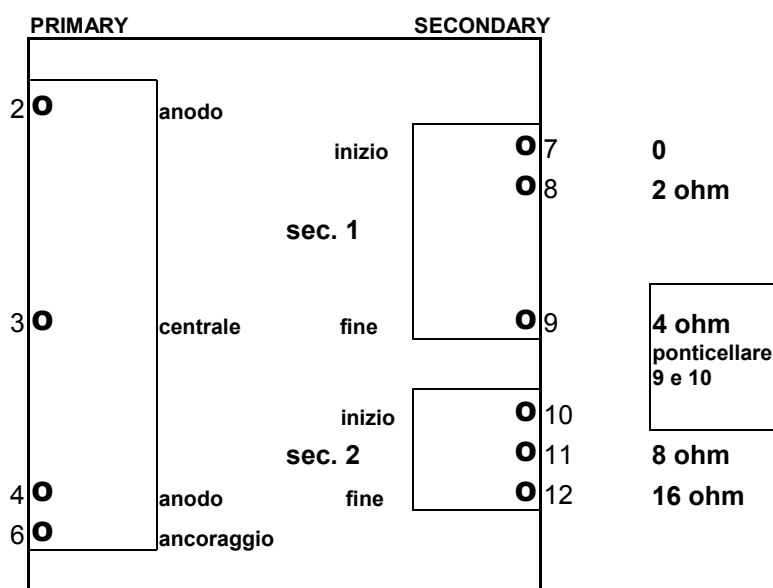
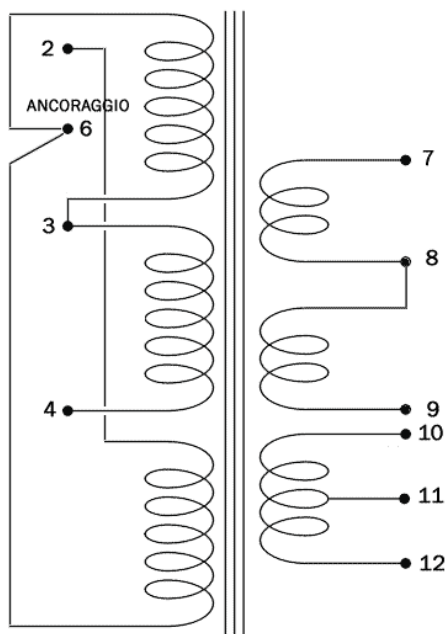
Dimensions (HxWxD):	Weight (Kg):	Mount: vertical
---------------------	--------------	-----------------

Nucleo centrale lamierini (colonna x altezza pacco lamierini)	mm	40x50
Sezione nucleo centrale	cm2	18,01
Induzione magnetica	W/m2	1,2
f.e.m.i. in una spira	V	0,48
Rendimento del trasformatore	n	0,89
Caduta di tensione percentuale	V%	2,59
Frequenza di lavoro	Hz	50
Potenza assorbita dal primario	VA	326,4
Potenza disponibile al secondario	VA	290,6

NOTE:



A: 82mm  
B: 114mm  
C: 100mm  
D: 68mm  
E: 70mm



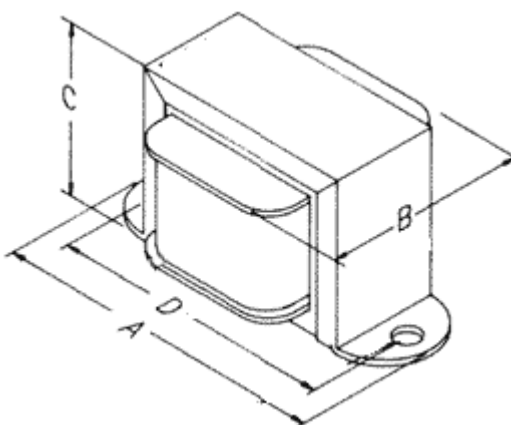
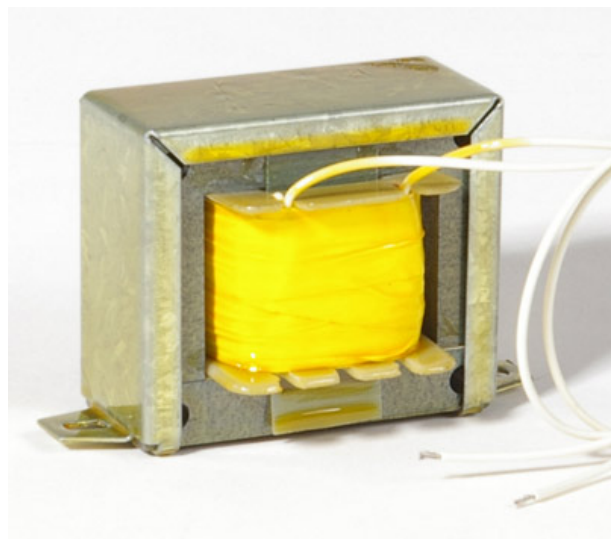
Output Trasformer mod.	Primary	Secondary	Amp. type	Power	Replacement
TUSLO100	2000ohm	2,4,8,16	push pull	100W	

Dimensions (HxWxD):	Weight (Kg):	Mount: <b>vertical</b>
---------------------	--------------	------------------------

Nucleo centrale lamierini (colonna x altezza pacco lamierini)	mm	<b>32x50</b>
Sezione nucleo centrale	cm2	<b>14,41</b>
Volume pacco lamierini	mm2	<b>307,2</b>
Peso del pacco lamierini	Kg	<b>2,088</b>
Induttanza primario	Henry	<b>15,91</b>
Induzione magnetica	W/m2	<b>1</b>
Frequenza minima riproducibile	Hz	<b>20</b>
Potenza assorbita dal primario	VA	<b>155,5</b>
Potenza disponibile al secondario	VA	<b>140</b>

NOTE:

# IMPEDENZA CM10



A: 95mm  
B: 64mm  
C: 62mm  
D: 80mm

Choke mod.	Ind. Henrys	DC Current	Resistance	Max V DC	Replacement
CM10	10H	125mA	115ohm	500	

Dimensions (HxWxD):	Weight (Kg):	Mount:
NOTE:		